

SHOW
SHORT WIRE SYSTEM



STONE EXTRACTION BASKET

DESIGNED FOR WIRE-GUIDED STONE EXTRACTION

The stone extraction baskets from the SHOW series enable the endoscopic removal of stones from the bile ducts. The basket consists of four hexagonally shaped stainless

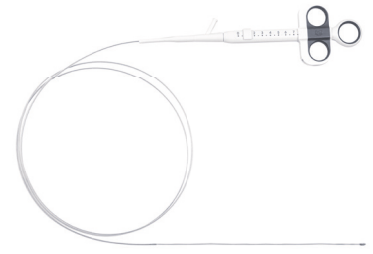
steel cables. The hose tip on the distal end, enables wire-guided stone extraction. The extraction baskets are available in two sizes to meet various clinical requirements.

SPECIFIC CHARACTERISTICS

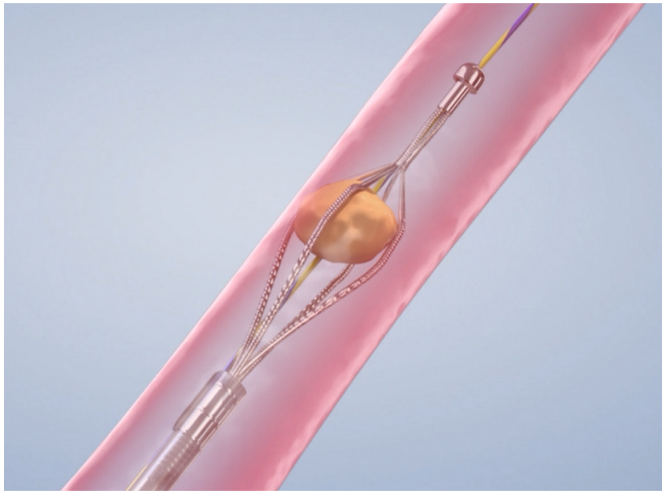
- Basket made of four stainless steel wires in a hexagonal shape
- Available in sizes 15 and 20 mm
- Suitable for short and long wire ERCP
- Not suitable for lithotripsy
- Latex-free
- Compatible guidewire 0.035 inch



Distal end with hose tip



The entire system has a Working length of 2,000 mm



SPECIFICATIONS

REF	Form	Ø basket mm	Working channel mm	Working length (mm)
STONE EXTRACTION BASKET				
RSEB-H4-15	Hexagonal, 4 cables	15	3.7	2000
RSEB-H4-20	Hexagonal, 4 cables	20	3.7	2000

Packaging unit: 1 box